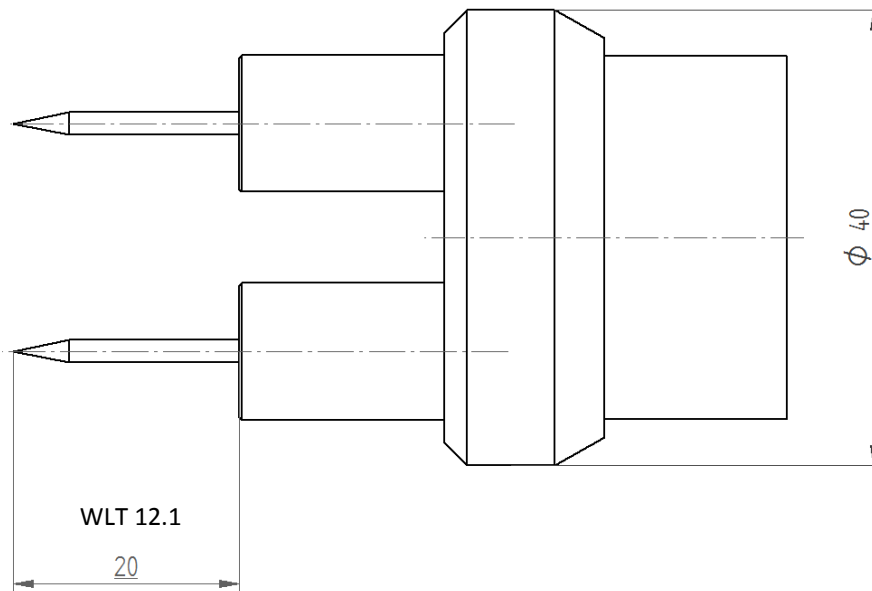
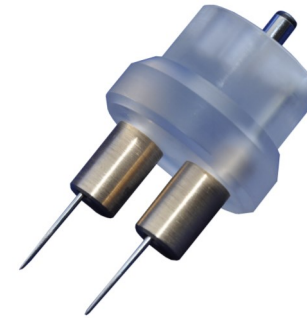


Needles for WLT 12



WLT 12.1

Needle Ø 2 mm, length 20 mm

WLT 12.2

Needle Ø 2,3 mm, length 60 mm

WLT 12.3

Needle Ø 2,3 mm, length 80 mm

WLT 12.4

Needle Ø 2,3 mm, length 100 mm

(needle length = length of the outside holder)